





ORGAN





REVIEW MATERI





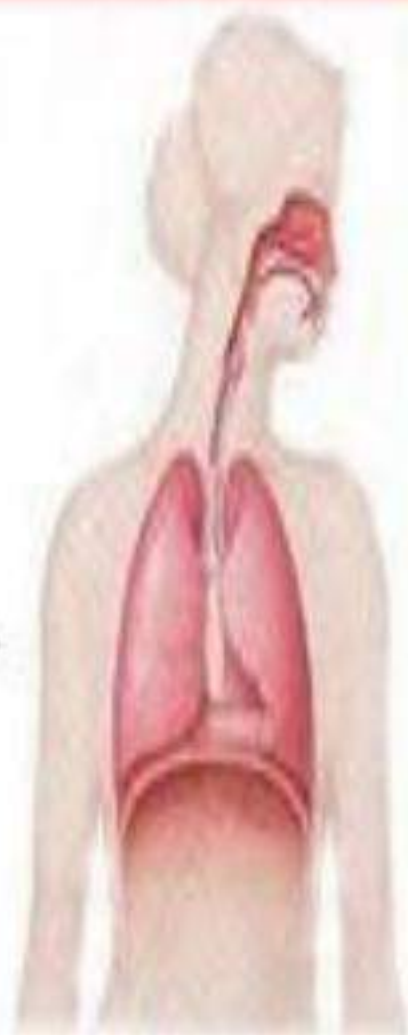
Cell



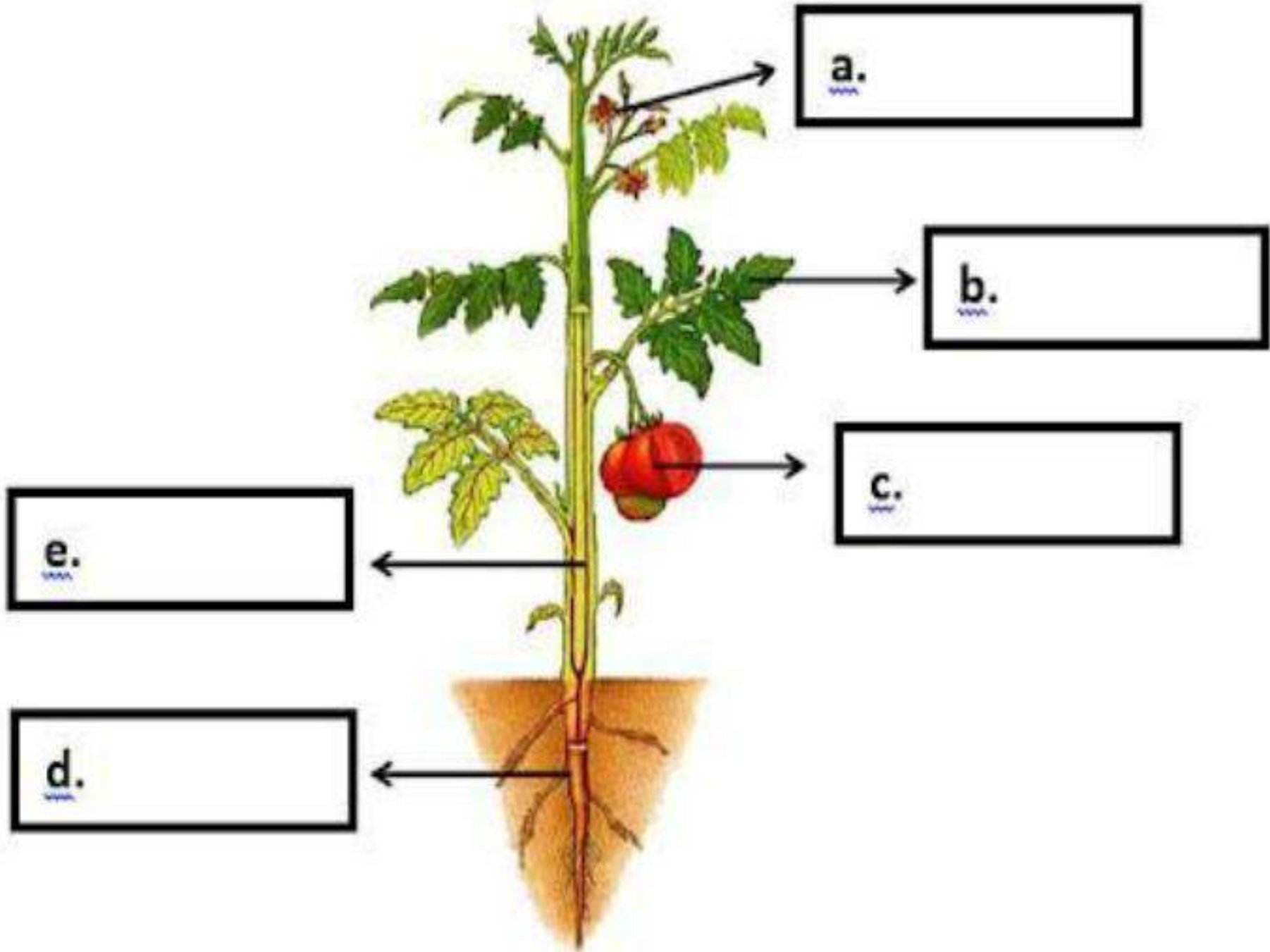
Tissue



Organ



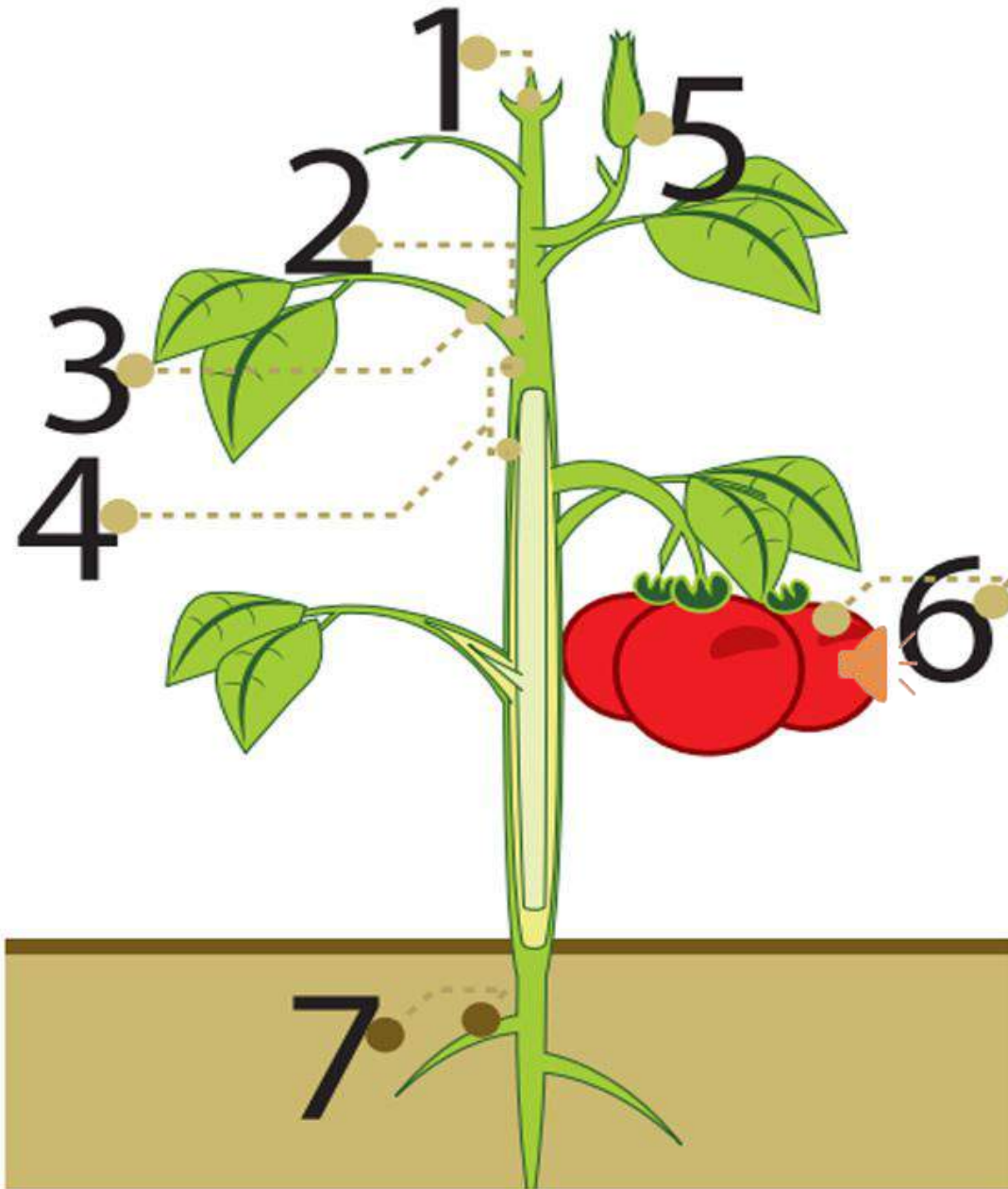
System





LET'S
DO IT!

**Buka buku paket IPA
halaman 16**



1. Ujung tunas
2. Kuncup
3. Tangkai
4. Buku
5. Bunga
6. Buah
7. Akar

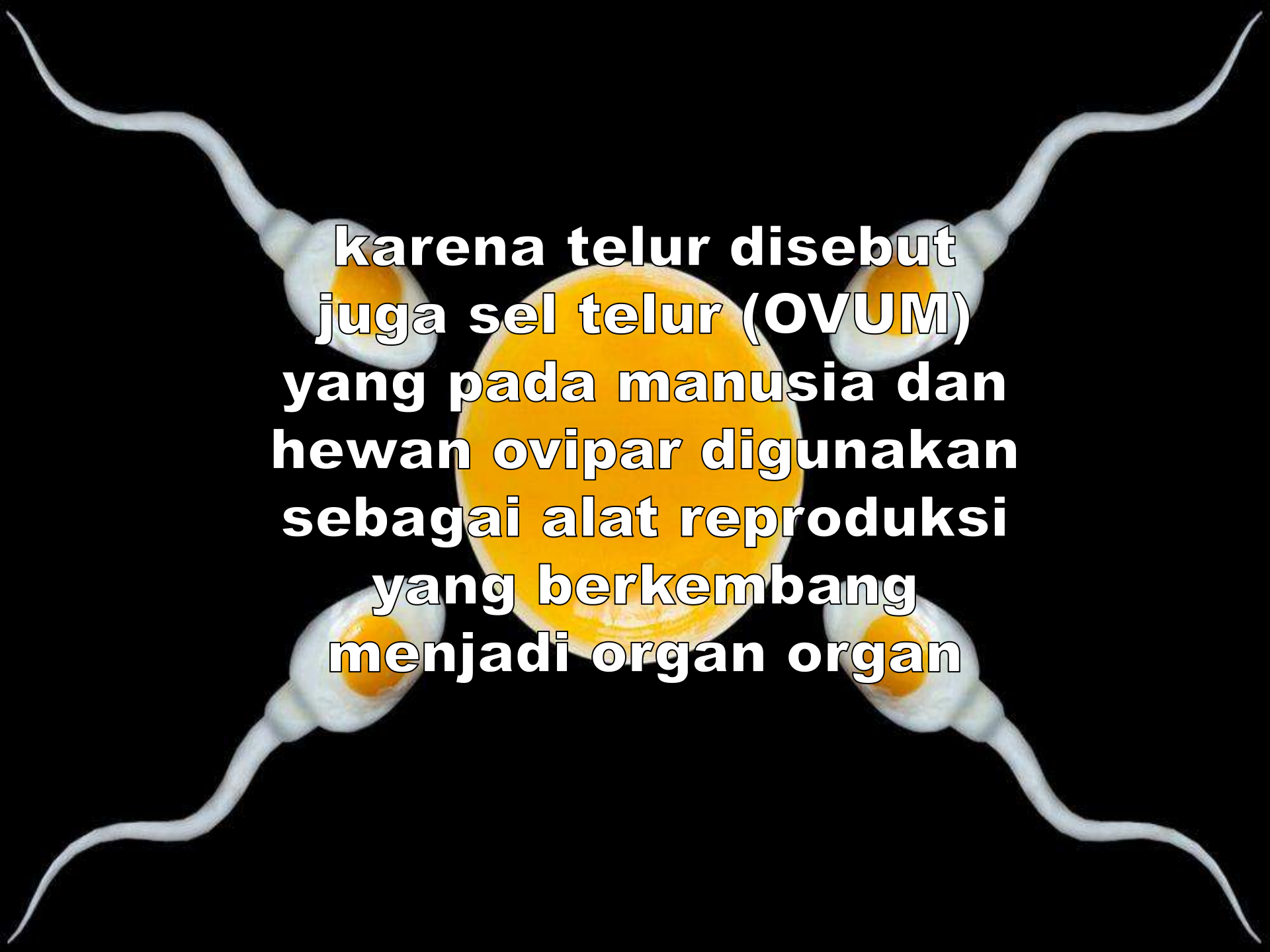


LET'S
DO IT!

**Buka buku paket IPA
halaman 17**



Kenapa Telur
Termasuk
Sel ??

The image features a central, large, bright yellow egg cell with a visible nucleus. Surrounding it are four sperm cells, each with a white head and a long, thin tail. The background is black. Overlaid on the image is white text with a black outline, explaining the role of eggs in reproduction.

**karena telur disebut
juga sel telur (OVUM)
yang pada manusia dan
hewan ovipar digunakan
sebagai alat reproduksi
yang berkembang
menjadi organ organ**



ORGAN MANUSIA



Organ adalah kumpulan jaringan yang memiliki satu fungsi atau lebih.



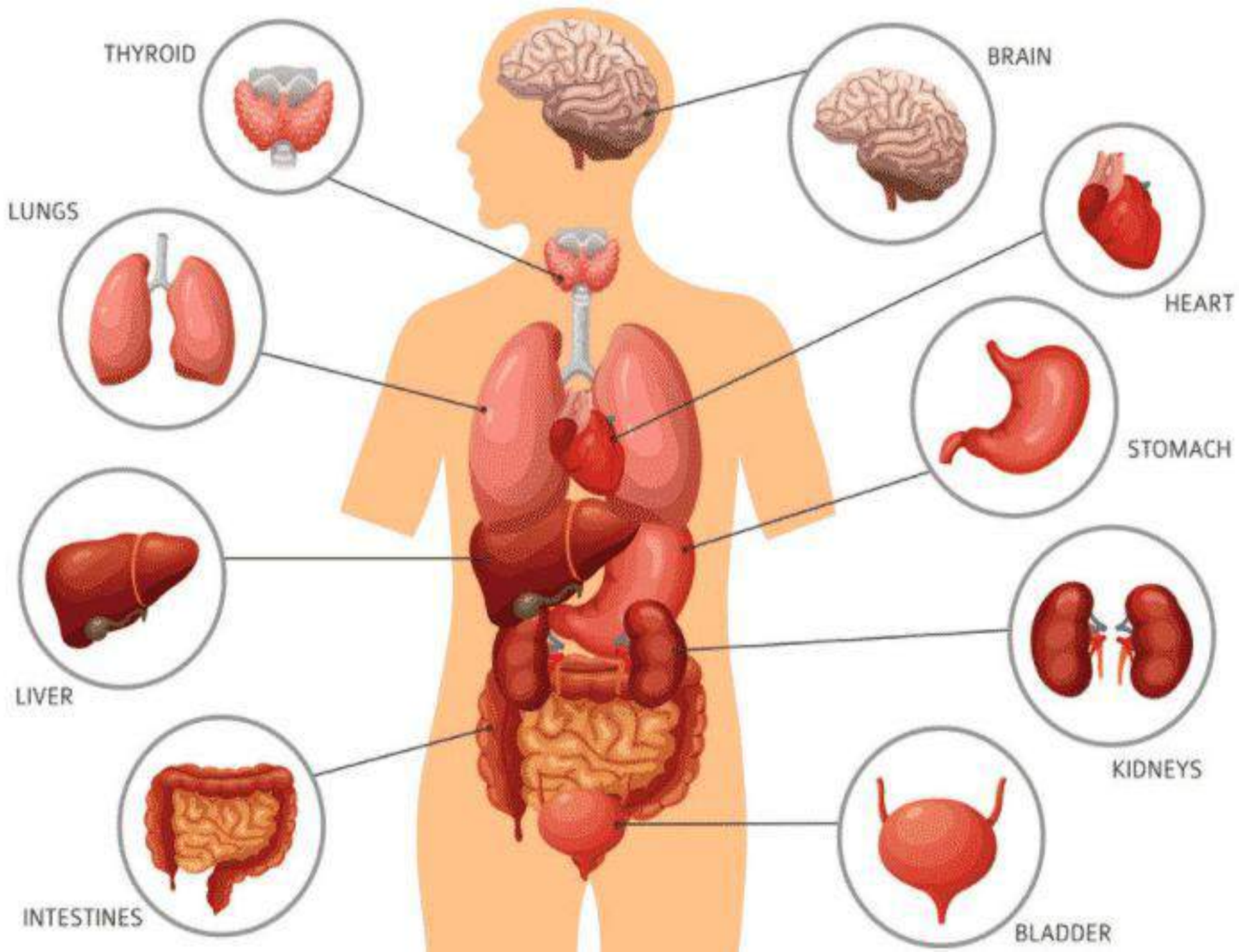
Berdasarkan letaknya, organ tubuh terbagi menjadi organ dalam dan organ luar.

ORGAN LUAR ???

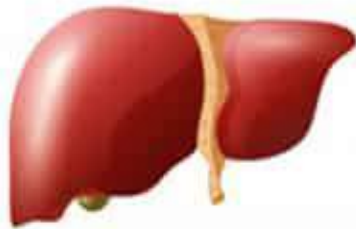


ORGAN DALAM ???

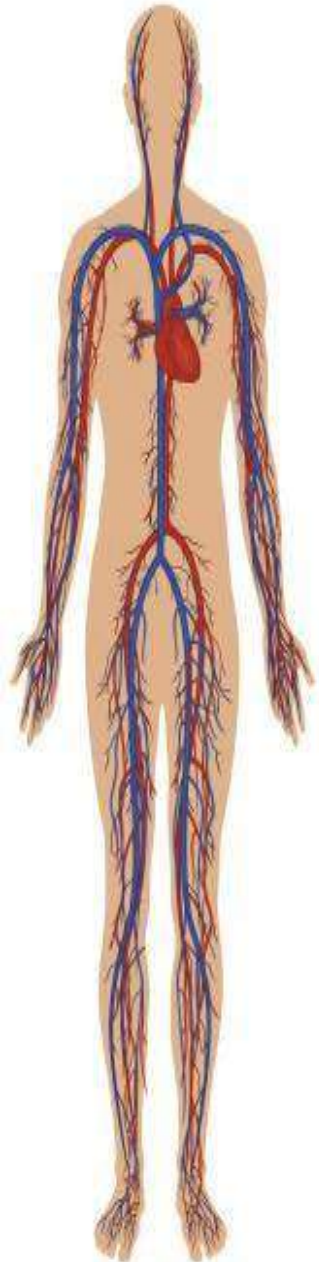




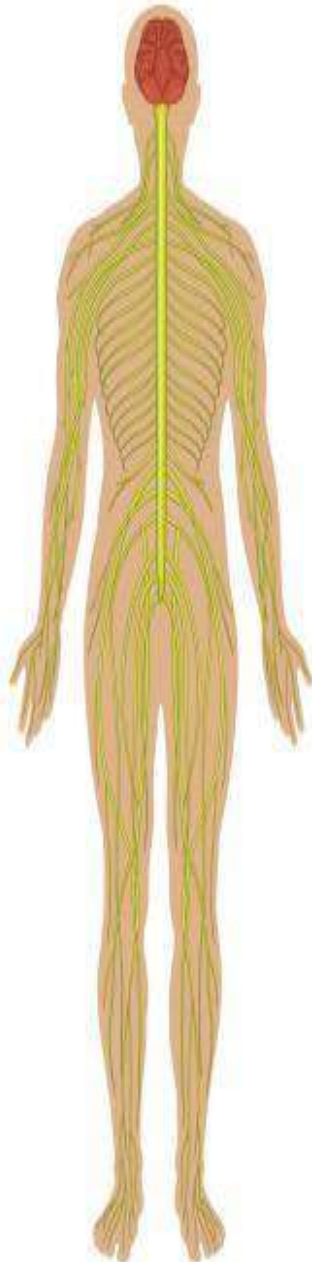
Sistem Organ Manusia



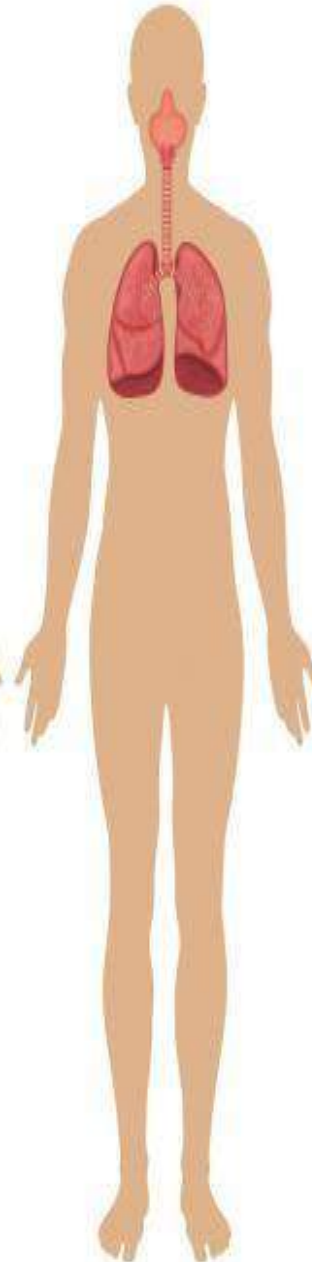
Sistem Peredaran



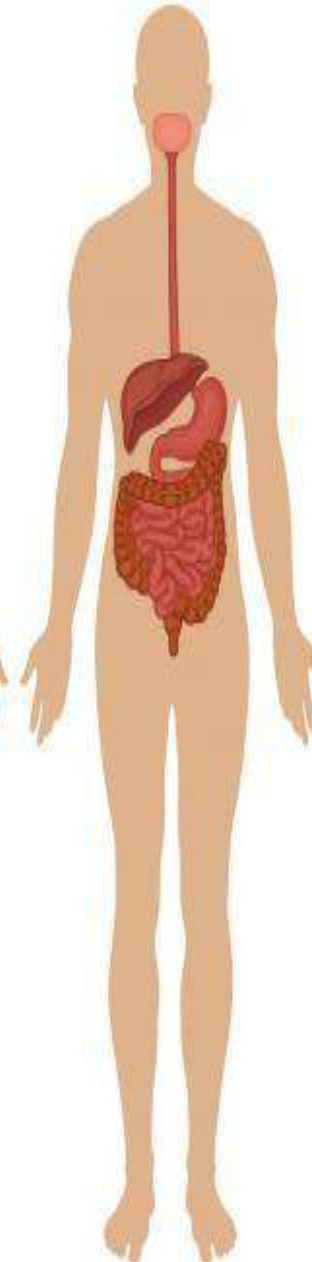
Sistem Saraf



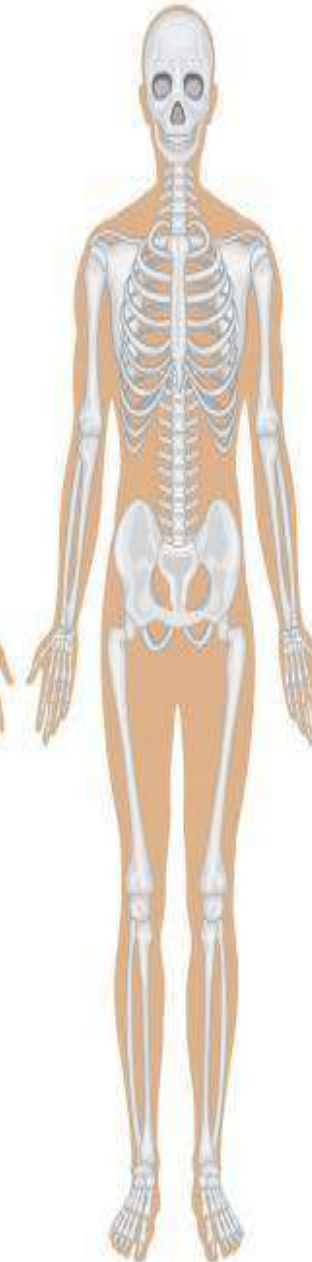
Sistem Pernafasan



Sistem Pencernaan



Sistem Rangka



Sistem Muskular



A yellow sticky note is shown, partially attached to a white surface with a piece of grey tape at the top left. The note features the text "LET'S DO IT!" written in a blue, textured, hand-drawn font. A small orange speaker icon is positioned between the two lines of text.

LET'S
DO IT!

**Buka buku paket IPA
halaman 20**

Thank
you!



ALHAMDULILLAH

BAB I
SELESAI



Walaikum
salam

